



90000 Paint shaker

SAFETY PRECAUTIONS

1. For professional use only
2. Keep out of reach of children
3. Use only air tool oil
4. Do not shake aerosols for more than one minute
5. Do not use in enclosed areas
6. Maintain proper ventilation at all times



PLEASE KEEP THIS MANUAL SAFE FOR FUTURE REFERENCE

Specification



IMPORTANT

Please read through this Manual carefully before using the 90000.

This tool must only be used for sanding and within the parameters outlined in this manual. All users of the equipment should be trained in any risks associated with the products they are sanding or using as finishing aids.

Technical Specification

Capacity	4ltr Can
Speed	700 cycles per minute
Cycle size	85-90mm
Air Consumption	1.35 CFM
Air Pressure	70-100PSI
Timer	1-5mins
Vibration Level	5.44m/s ²
Noise Level	85.7dB(A)

Contents of Pack

Box 1 Paint Shaker

Warranty

Important, please read before use.

We hope you will be very happy with your purchase, but if you do have a problem then you also have the peace of mind of a 6 month warranty which comes into play from the date of purchase.

Scope of warranty

The warranty will cover you from all faults caused by faulty components and workmanship. This warranty does not cover consumables and normal wear & tear.

Validity

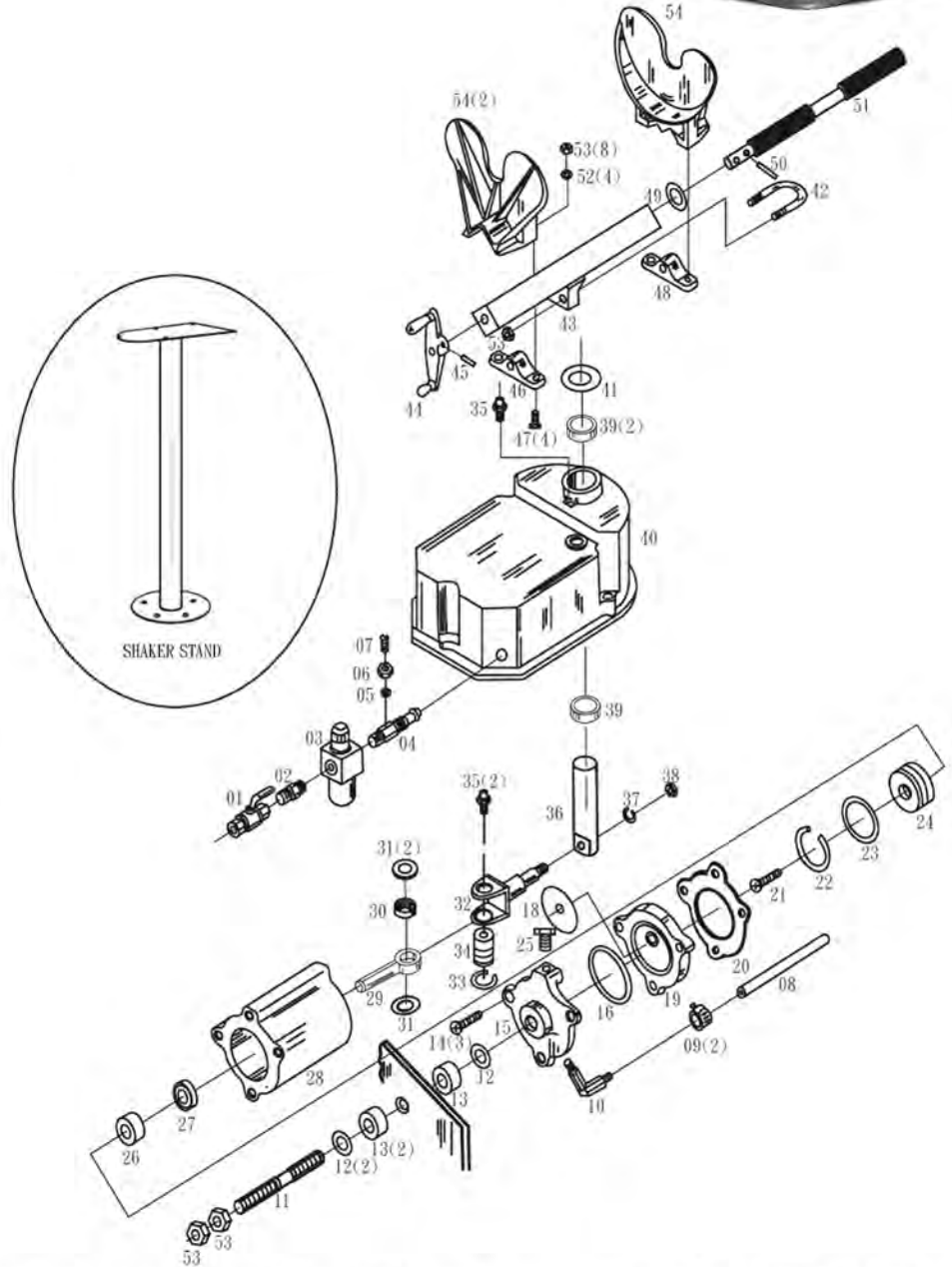
This warranty is valid for 6 months. Warranty becomes invalid under the following circumstances;

- Tool is taken apart of any reason without our prior consent.
- Air supply line is used without a properly working air filter which allows water into the internals of the unit.

PARTS BREAKDOWN 90000



Ref. No.	Description	Q'ty
01	Control valve	1
02	Brass Nipple	1
03	Automatic Oilier	1
04	Inlet Fitting	1
05	Adj. Seal	1
06	Adj. jam Nut	1
07	Adj. Screw	1
08	Air Hose	1
09	Hose Clamp	2
10	Intel EII Fitting	1
11	Cylinder Stud	1
12	Shock Metal Washer	2
13	Shock Rubber Washer	2
14	Valve Body Screw	3
15	Lower Valve Body	1
16	Valve Body O-Ring	1
17	Cap Screw	1
18	Valve Disc	1
19	Upper Valve Body	1
20	Packing	1
21	Piston Screw	1
22	Wear Ring	1
23	Piston O-Ring	1
24	Piston	1
25	Cock Air	1
26	Rod Bearing	1
27	Rod Seal	1
28	Cylinder Body	1
29	Cylinder Rod	1
30	Rod End Bearing	1
31	Crank Thrust Washer	2
32	Crank Arm	1
33	Crank Pin Ret. Ring	2
34	Crank Pin	1
35	Zerk Fitting	2
36	Main Shaft	1
37	Spring Lock Washer 1/2"	1
38	1/2" - 12 Nut	1
39	Main Bearing	2
40	Housing: Assembly	1
41	Thrust Washer	1
42	U-Bolt	1
43	Clamp Frame Weld	1
44	Handle	1
45	Roll Pin	1
46	Clamp Nut (L H)	1
47	Jaw Bolt	4
48	Clamp Nut (R.H.)	1
49	Thrust Washer	1
50	Roll Pin	1
51	Clamp Screw	1
52	Jaw Shin	4
53	3/8" - 16 Nut	8
54	Jaw	2



General Safety Instructions

- 1 Do not allow children and other unauthorised persons to use this tool.
- 2 Do not allow tool to come into contact with live electrical sources.
- 3 Use ear, hand and eye protection when using this tool.
- 4 Do not use under the influence of drugs, alcohol or intoxicating medication.
- 5 Do not use if parts are damaged or broken.
- 6 Do not use if the can you are going to shake is damaged, worn, leaking or otherwise not sealed properly.
- 7 It is strongly recommended that this tool is bolted the work surface.
- 8 Do not shake low flash point (21°C) materials or materials that are not intended to be shaken.
- 9 Do not shake aerosols for more that 1-5 minute.



OPERATION

CLAMP CAN firmly, but avoid crushing can. Clamp mostly empty cans and aerosol cans with lids toward clamp handle. Clamp square gallons lid up, long sides against clamp jaws, corners resting on jaw cradles. Tighten square gallons securely with can straight up. **WATCH SQUARE GALLONS AND AEROSOL CANS WHILE SHAKING** to make sure they don't leak or come loose. Do NOT SHAKE AEROSOLS FOR MORE THAN ONE (1) MINUTE. DO NOT SHAKE AEROSOLS IF CAN TEMPERATURE IS OVER 100° F (38° C).

START AND STOP shaker by opening and closing control valve quickly, about 1/4 turn. If shaker stops exactly at center position or is not getting enough oil, it may not start automatically. If this occurs close control valve, move can clamp to one side and re-start.

ADJUST LUBRICATOR Close lubricator adjusting screw (turn clockwise) until SLIGHTLY snug. Start shaker then open oilier adjusting screw (turn counter clockwise) 1/8 turn. After about 1 minute you should see oil dripping from the drip tube in the site glass. If oil doesn't start dripping, open adjusting screw another 1/16 turn. Adjust drip rate to **1 DROP EVERY 20 TO 30 SECONDS**.

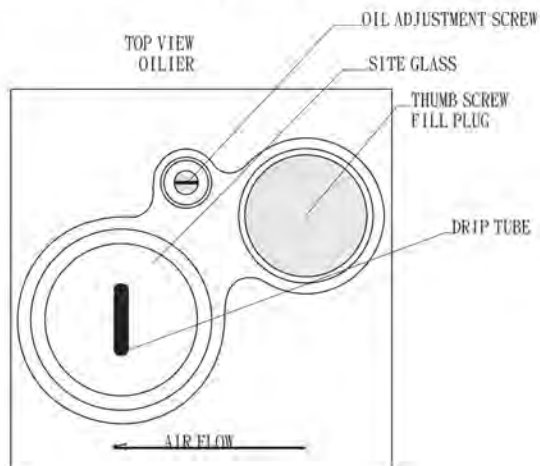
NOTE: Each time the Shaker is started, lubricator may take a few seconds to start dripping oil. **DO NOT FORCE** the adjustment screw. It stops when fully open and when closed. If oilier is not working, check oil level and see "TROUBLESHOOTING".

CHECK/ADJUST SHAKE ANGLE if air pressure at shaker is over 120 psi (780 kPa) adjust as follows: With air line at maximum normal pressure,

- (a) Clamp up a full one-gallon round can of pain and start shaker
- (b) Loosen 3/8-inch lock nut at Adjustment Screw on Air Inlet Fitting and adjust screw to obtain a total shaking angle of motion of about 30°.
- (c) Stop shaker and tighten lock nut while holding adjustment.

GREASE - LUBRICATE clamp screw and both grease zert fittings once every three months (more often in severe duty/outdoor/dirty areas). Grease crank pin zert (one shot) through vent hole when can clamp is rotated left to stop. Dry lube clamp frame.

CHECK OIL LEVEL once a week (more often for heavy duty); Unscrew lubricator bowl and dump watery/milky oil out, Refill to level mark with air tool oil and carefully re-install. Make sure bowl gasket ring is in place and screw bowl on straight. **NOTE:** Vibration may make oiling invisible if lubricator is mounted directly to shaker. Set feed rate at light load and reduced speed and unscrew bowl and check oil level after several hours to ensure level is dropping and oil is feeding.



SPECIFICATIONS

Capacity:
Pints through 4 liter round cans, including gallons, Imperial gallons, most aerosols (with caps) and square gallons. Up to 16 lbs. gross can weight. Takes 1/4 and 1/2 pints stacked or with spacer.

Speed:
Up to 700 cycles/minute at 30° shake angle. Adjustable at control valve, automatically compensates for can size.

Air Pressure:
70 to 175 PSI (lbs./in gage) (600 to 1200 kPa). 2 Line pressure over 175 PSI requires regulator and relief valve upstream of air hose.

Air Inlet Threads:
1/4-inch PTF (Seal with thread tape or thread sealant).

Air Consumption:
Approximately 4.3 CFM (0.002 M3/sec) free air with 1 gallon (U.S.) 12 lb. can at 30° shake angle.

Recommended Oil:
Petroleum 5W to 10W Non-detergent Rust Inhibiting Air Tool Oil such as Lubriplate Rockwell 10 R. Oil should contain no gum removers or petroleum distillates. Do not use motor oil.

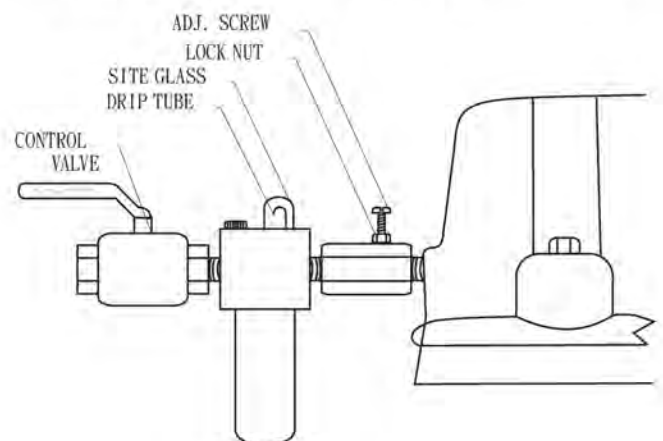
Oil Consumption:
3 drops air tool oil at air inlet before every use, or install automatic lubricator and set oil drip rate per "ADJUST LUBRICATOR". (See "OPERATION".) 10 minutes maximum operation between manual oilings.

Grease:
Multipurpose calcium or lithium-based chassis grease. Relubricate every 3 to 6 months more often in severe service.

Recommended Shake Time:
1-1/2 minutes, more for severely settled products or low air pressure.

Shake Angle:
If operating at over 120 PSI pressure, must be set to 30° with full gallon can clamped, air at maximum normal line pressure. (See "OPERATION".)

Final Filter:
Bronze, spring-retained 40 micron element behind Inlet EII.



EC DECLARATION OF CONFORMITY

We declare that the equipment detail below, to the best of our knowledge and ability, complies with the following Directives.
Machinery Directives - 2006/42/EC

Equipment Description Air Powered Paint Shaker

The following Transposed Harmonised Standards have been applied in the design and construction of this equipment:

- EN ISO 12100-1:2003+A1:2009 Safety of machinery. Basic concepts, general principles for design. Basic terminology, methodology
- EN ISO 12100-2:2003+A1:2009 Safety of machinery. Basic concepts, general principles for design. Technical principles

The manufacturer and the distributor, stated above, hold the Technical Construction File for this equipment.

Producer	Outil-Pro R.G.A Ltée
-----------------	-----------------------------

Declares, that the product described below :

Name	Paint Shaker
Type/ model	90000
Specification	Max. air pressure : 7 bar RPM : 700

Meets the requirement of the following standards and harmonized standard :
Machinery Directive 2006/42/EC

And meets the essential requirements of the following directives:
EN 292-1/2, EN563, EN1050

This declaration of conformity is the basis for labeling a product of CE marking
This declaration relates exclusively to the machine in the state in which it is placed on the market, and excludes components which are added by the end user or carried out by the subsequent actions.

Person responsible for the preparation and storage of technical documentation

26, 07, 2017, Taiwan

Date and Place of Issue



Signature